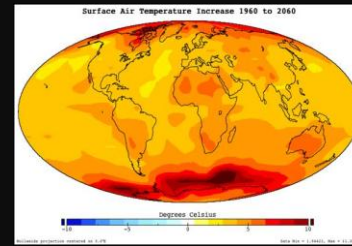
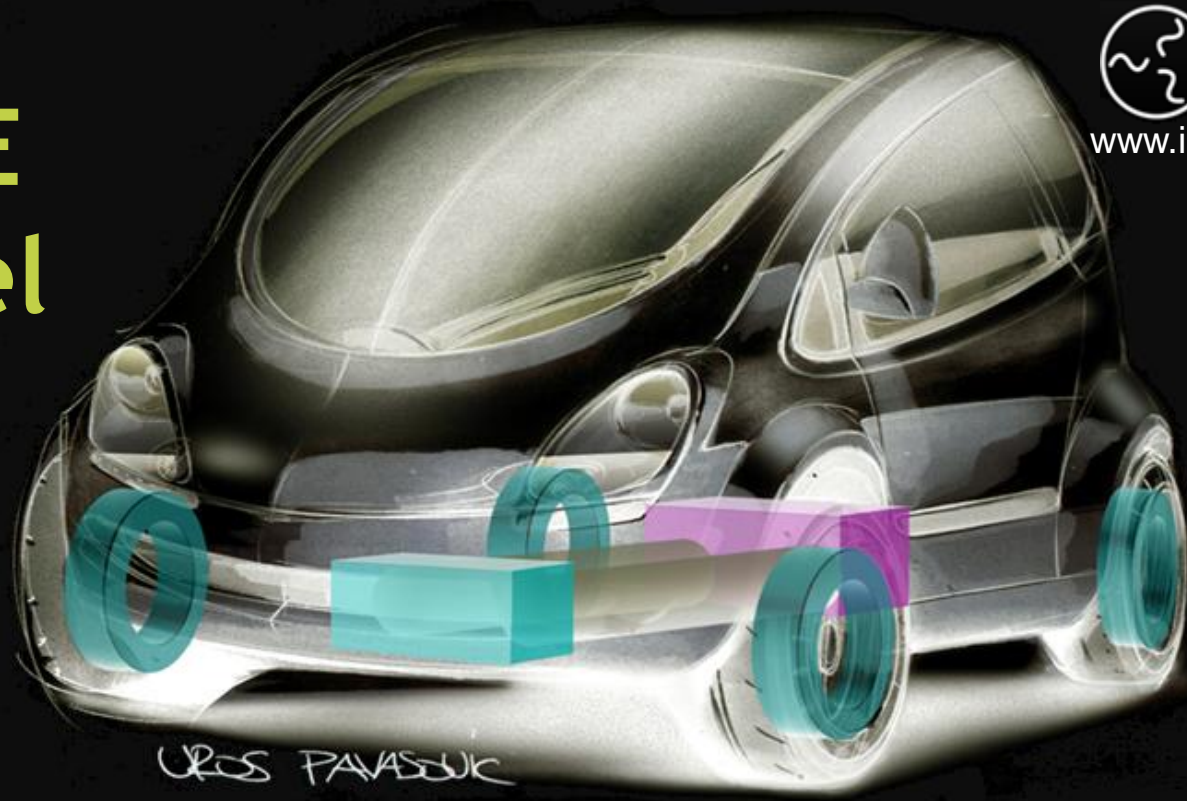


ELAPHE in-wheel motors



Efficient resource use

Clean water

Clean air

Global warming fight

Renewable energy

Elaphe Ltd.

- in-wheel motor innovations + R&D
- JSI spin-of, Technology Park Ljubljana member
- “The Best business idea” winner
- The most ecological company in 2007
- Innovation forum winner 2008
- Intel Challenge EU finalist in 2010
- 3rd place at EEVC Cleantech 2010

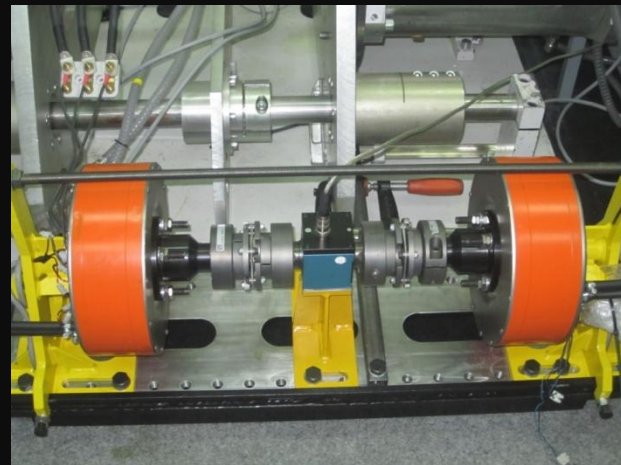


FP7 proposal:

Research: “Suitability of in-wheel motor technology for the next generation of electric cars”

3 in-wheel motor cars to test and validate

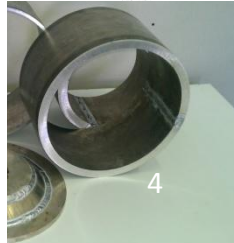
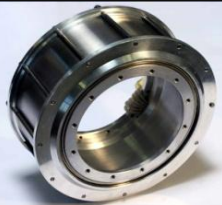
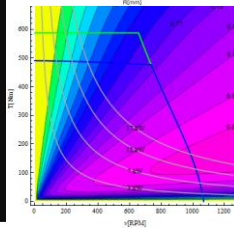
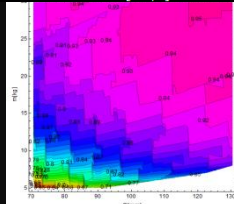
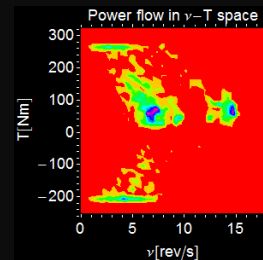
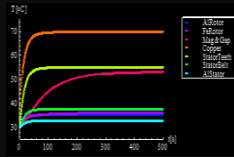
- Safety
- Durability
- Compatibility
- Performance
- Public acceptance
- Manufacturability and
- Price



Offer and challenges

What we have:

- In-wheel motor technology proven with 7 generations of prototypes
- Ambitious and experienced team
- Prototyping know-how and equipment
- Unique computer simulation software
- Basic experience with EU projects
- Good personal network at national level



Missing or incomplete skills

- Complete system design
- Optimization of other components
- Testing up to automotive standards
- Automotive industry production know-how
- Knowledge of decision making criteria hierarchy in automotive industry
- Mass production

Summary

- FP7 project
- In-wheel motor technology
- Three electric cars
- Feasibility research
- Innovation, R&D
- Production and testing
- Safety, durability
- Compatibility ...



ELAPHE LTD.

Technology park, Teslova 30
1000 Ljubljana, Slovenia-EU

www.in-wheel.com

Tel: +386 40 731742

gorazd@elaphe-ev.com